

Do Now: Tell whether the ordered pair is a solution of the equation.

1. $y = 4x + 9$; $(-2, 1)$

Yes

2. $7y - 3x = 11$; $(5, 8)$

No

(35) $y = 2x + 5$ $(-1, a)$ Laila
 $x = -1, y = a$

(36) $y = -3x - 1$ $(a, 5)$ Stephen

(37) $4x - 7y = 19$ $(-4, a)$ Epiphany

(38) See your notes

8.2 Linear Equations in Two Variables

8.F

- SWBAT find solutions of equations in two variables.
- SWBAT create representations to communicate mathematical ideas.

Calculators: No

The Hawaiian volcano Mauna Loa has erupted many times. In 1859, lava from the volcano traveled 32 miles to the Pacific Ocean at an average speed of 4 miles per hour. The lava's distance d (in miles) from the ocean t hours after it left the volcano can be approximated by the equation $d = 32 - 4t$

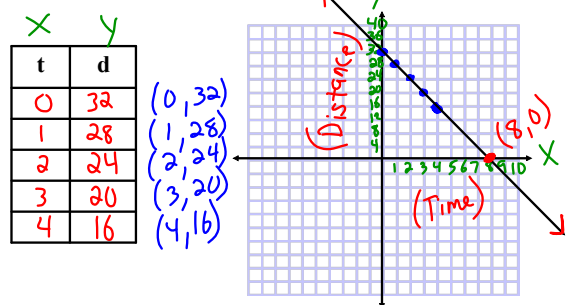
- Make a table of solutions for the equation.
- How long did it take the lava to reach the ocean?

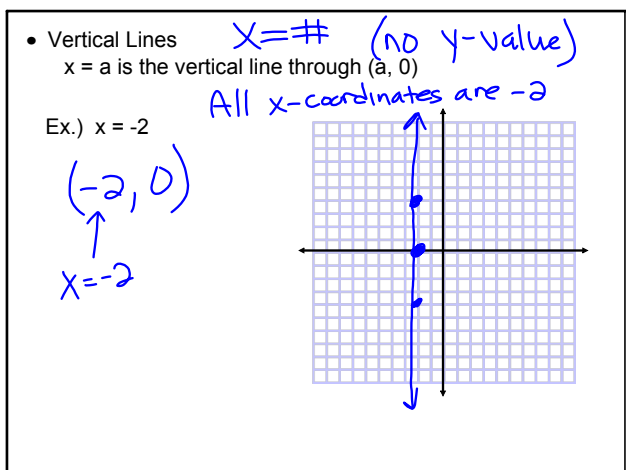
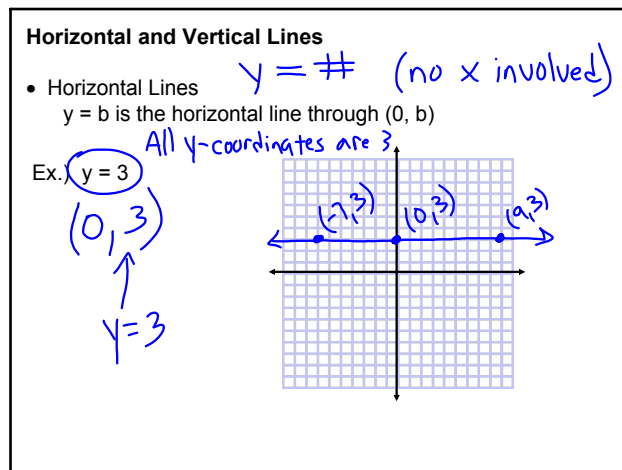
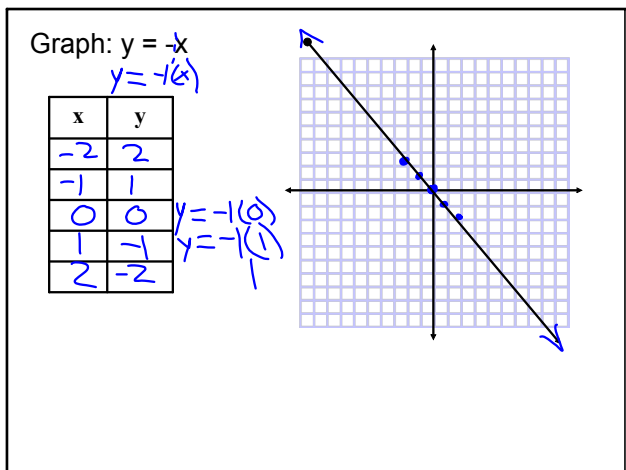
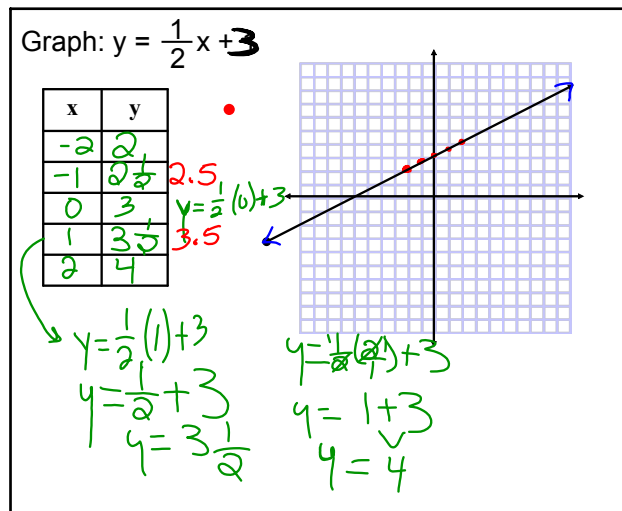
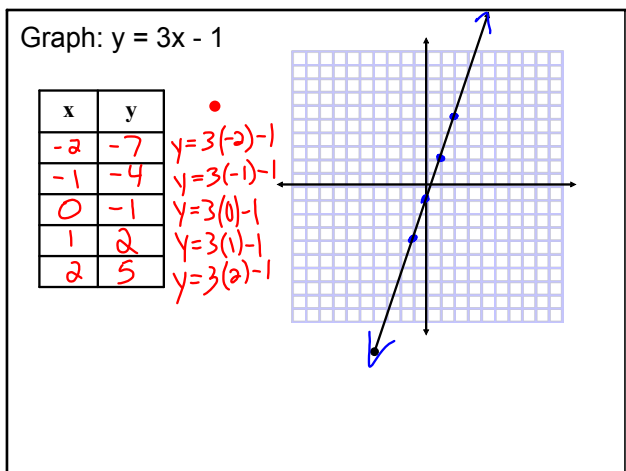
- Make a table of solutions for the equation.

t	d

- How long did it take the lava to reach the ocean?

How can we solve this problem using a graph?





Write the equation in function form (slope-intercept form):

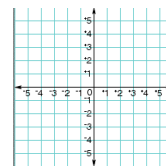
a.) $x + 2y = 6$

b.) $-4x + 3y = -3$

Exit Pass 8.2

Write the equation in function form. Then graph the equation.

$$3x + 2y = -2$$



"Don't blame the sea if you cannot catch a fish."

Working individually or with a partner, complete the workbook.

Workbook pg. 103 #9-23 odds



Reflection of Today's Lesson

8.2 Linear Equations in Two Variables

8.F

- SWBAT find solutions of equations in two variables.
- SWBAT create representations to communicate mathematical ideas.

Calculators: No

Homework

pg. 394 ~~#16-30 evens~~ # 16-22 evens

